



105b Mounts Road, Greenhithe, DA9 9ND

Guide price £180,000



# 105b Mounts Road Greenhithe, DA9 9ND



Guide Price £180,000 - £190,000 The Homes Group are delighted to present to the market this one bedroom purpose built flat. The home is generously proportioned with living/dining room and separate kitchen which offer views of the communal gardens. The bedroom benefits from full width fitted wardrobes plus a good size bathroom. The flat is located within a short walk of Greenhithe Station, Asda supermarket and Bluewater shopping centre. We feel this flat would make the ideal first buy or a great investment opportunity thanks to the vicinity to public transport & local employment.

Tenure: Leasehold  
Term 999 years from 25th December 1987  
Ground rent: Peppercorn  
Service Charge: £1500 per annum.  
This information will be verified by the solicitors.

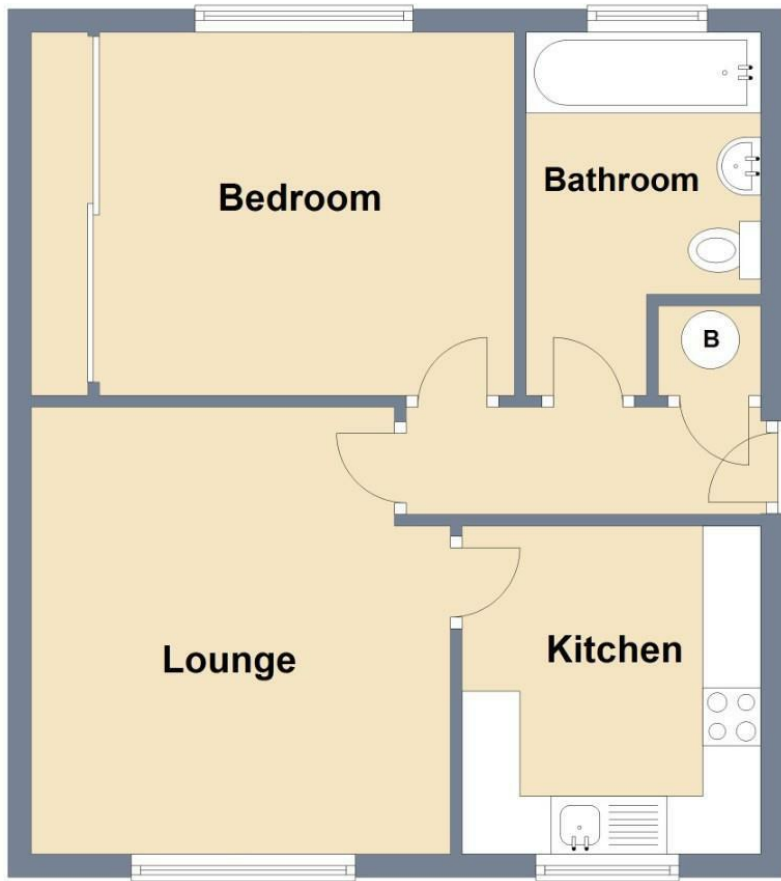
- One bedroom flat
- 9' x 8' Kitchen
- Modern bathroom
- Double glazing
- Ideal first time or investment buy
- 12' Living room
- Bedroom with fitted wardrobes
- Allocated parking
- Electric heating
- Close to station





# Floor Plan

Approx. 44.7 sq. metres (481.4 sq. feet)



Total area: approx. 44.7 sq. metres (481.4 sq. feet)



## Energy Efficiency Rating

	Current	Potential
Very energy efficient - lower running costs		
(92 plus) <b>A</b>		
(81-91) <b>B</b>		
(69-80) <b>C</b>		
(55-68) <b>D</b>		
(39-54) <b>E</b>		
(21-38) <b>F</b>		
(1-20) <b>G</b>		
Not energy efficient - higher running costs		
	68	78

England & Wales EU Directive 2002/91/EC

## Environmental Impact (CO<sub>2</sub>) Rating

	Current	Potential
Very environmentally friendly - lower CO <sub>2</sub> emissions		
(92 plus) <b>A</b>		
(81-91) <b>B</b>		
(69-80) <b>C</b>		
(55-68) <b>D</b>		
(39-54) <b>E</b>		
(21-38) <b>F</b>		
(1-20) <b>G</b>		
Not environmentally friendly - higher CO <sub>2</sub> emissions		

England & Wales EU Directive 2002/91/EC

## Viewing

Please contact The Homes Group Office on 01322 875000 if you wish to arrange a viewing appointment for this property or require further information.

These particulars, whilst believed to be accurate are set out as a general outline only for guidance and do not constitute any part of an offer or contract. Intending purchasers should not rely on them as statements of representation of fact, but must satisfy themselves by inspection or otherwise as to their accuracy. No person in this firm's employment has the authority to make or give any representation or warranty in respect of the property.